

Select your Platform (Hover over link for more info)

[Macintosh](#)

[Internet Explorer 6 or Earlier](#)

[Internet Explorer 7 or later](#)

[Windows Explorer](#)

Artwork May be submitted electronically to our [ftp](#) site

Mac users:

Please **stuff or zip** all files to avoid file corruption.

Use Fetch (or similar) a free evaluation trial version is available (fetchsoftworks.com)

Host name 66.90.55.6

Username client

Password file

We accept no responsibility for print errors when artwork is not submitted according to the following and or not using provided templates

Templates are available for all of our products please call toll free 1 877 800 0024 ask and we will gladly send you them in your chosen format by e-mail or login to our FTP site using the username templates and password templates see below for FTP instruction.

We print using 4 color **CMYK** or 6 color (CMYKcm) wide format inkjet plotter; we can accept files in the Following formats:

Artwork should be at ¼ (25%) size at a minimum 300dpi.
Convert all fonts to outlines/curves and embed all images.
Include **all** fonts and external images as a precaution

PC Users:

Please **stuff or zip** all files to avoid file corruption.

Using internet Explorer 5 or 6

navigate to:-

ftp://66.90.55.6

Username client

Password file

Or navigate to

<ftp://client:file@66.90.55.6>

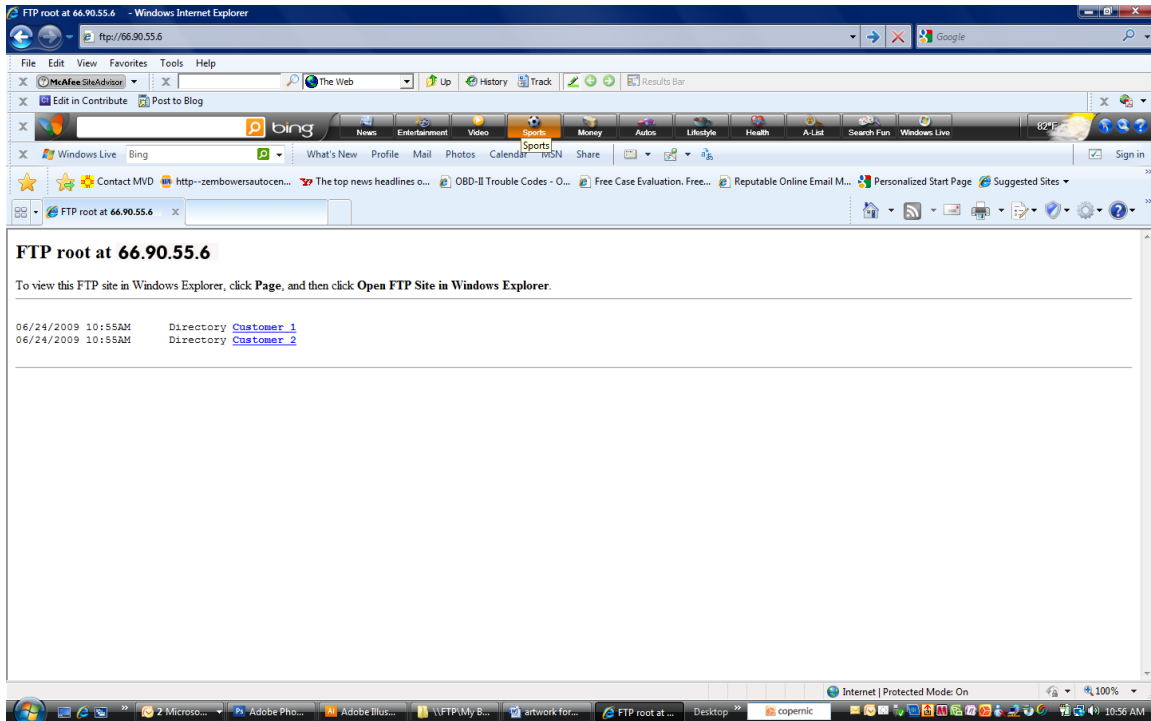
We accept no responsibility for print errors when artwork is not submitted according to the following and or not using provided templates

Templates are available for all of our products please call toll free 1 877 800 0024 ask and we will gladly send you them in your chosen format by e-mail or login to our FTP site using the username templates and password templates see below for FTP instruction.

We print using 4 color (**CMYK**) or 6 color (CMYKcm) wide format inkjet plotter; we can accept files in the Following formats:

Artwork should be at ¼ (25%) size at a minimum 300dpi.
Convert all fonts to outlines/curves and embed all images.
Include **all** fonts and external images as a precaution

Internet Explorer 7 or later When the following page is displayed click on the page icon (or Alt+P) then click Open FTP Site in Windows Explorer



When opened use the address bar at the top, if no address bar is visible right click the grey area and select address bar from the check list.

navigate to:-
ftp://66.90.55.6

Username client
Password file

Or navigate to
<ftp://client:file@66.90.55.6>

We accept no responsibility for print errors when artwork is not submitted according to the following and or not using provided templates

Templates are available for all of our products please call toll free 1 877 800 0024 ask and we will gladly send you them in your chosen format by e-mail or login to our FTP site using the username templates and password templates see below for FTP instruction.

We print using 4 color (**CMYK**) or 6 color (CMYKcm) wide format inkjet plotter; we can accept files in the Following formats:

Artwork should be at ¼ (25%) size at a minimum 300dpi.
Convert all fonts to outlines/curves and embed all images.
Include **all** fonts and external images as a precaution

Windows Explorer

When opened use the address bar at the top, if no address bar is visible right click the grey area and select address bar from the check list.

navigate to:-

ftp://66.90.55.6

Username client

Password file

Or navigate to

<ftp://client:file@66.90.55.6>

We accept no responsibility for print errors when artwork is not submitted according to the following and or not using provided templates

Templates are available for all of our products please call toll free 1 877 800 0024 ask and we will gladly send you them in your chosen format by e-mail or login to our FTP site using the username templates and password templates see below for FTP instruction.

We print using 4 color (**CMYK**) or 6 color (CMYKcm) wide format inkjet plotter; we can accept files in the Following formats:

Artwork should be at ¼ (25%) size at a minimum 300dpi.
Convert all fonts to outlines/curves and embed all images.
Include **all** fonts and external images as a precaution.

Mac

Adobe Illustrator CS3

CorelDraw 11

Photoshop may be used however we recommend that Photoshop images be placed in one of the above packages prior to placing text as text will pixelate in Photoshop

PC

Adobe Illustrator CS3

CorelDraw 11

***Photoshop may be used however we recommend that Photoshop images be placed in one of the above packages prior to placing text as text will pixelate in Photoshop.